

MacPHERSON

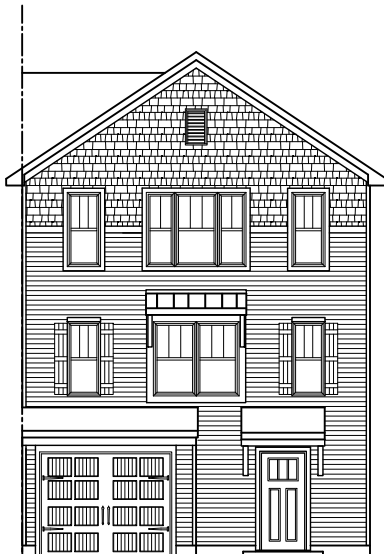
1,401 S.F.



FRONT ELEVATION A-10
(END UNIT)



FRONT ELEVATION A-10
(END UNIT W/ MASTER BATH)



FRONT ELEVATION B-10
(END UNIT)



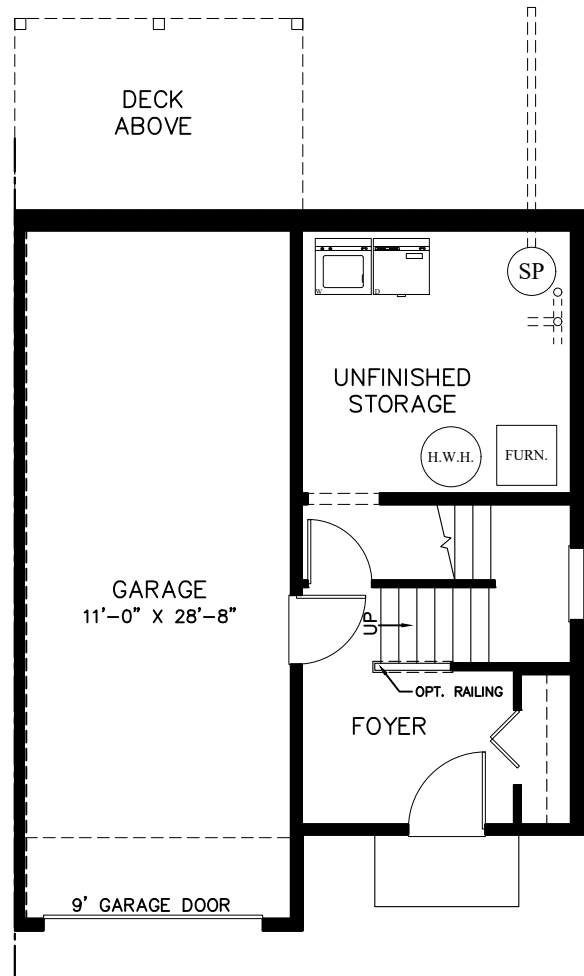
FRONT ELEVATION B-10
(END UNIT W/ MASTER BATH)

ELEVATION (END UNIT)

FOYER	=	129 S.F.
1ST FLOOR	=	624 S.F.
2ND FLOOR	=	648 S.F.
TOTAL	=	1,401 S.F.

Garman
BUILDERS
G

MacPHERSON

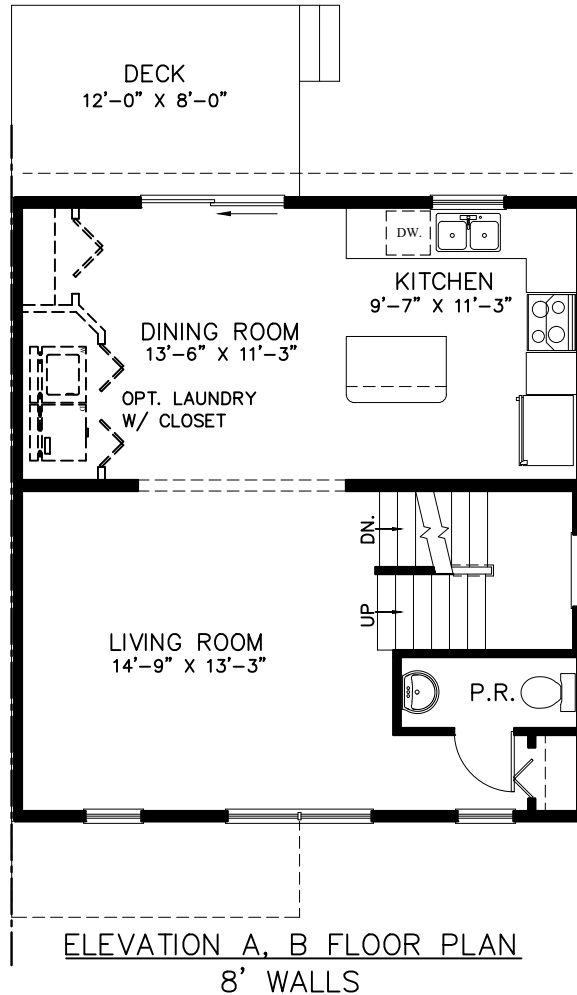


FOUNDATION DIAGRAM

ALL AREA DIMENSIONS ARE APPROXIMATE. FLOOR PLANS AND ELEVATIONS MAY SHOW OPTIONAL ITEMS NOT INCLUDED WITH BASE PRICE. THE BUILDER RESERVES THE RIGHT TO IMPROVE THE PLANS BY REVISING THE SPECIFICATIONS AND DIMENSIONS WITHOUT NOTICE.

FOUNDATION

MacPHERSON

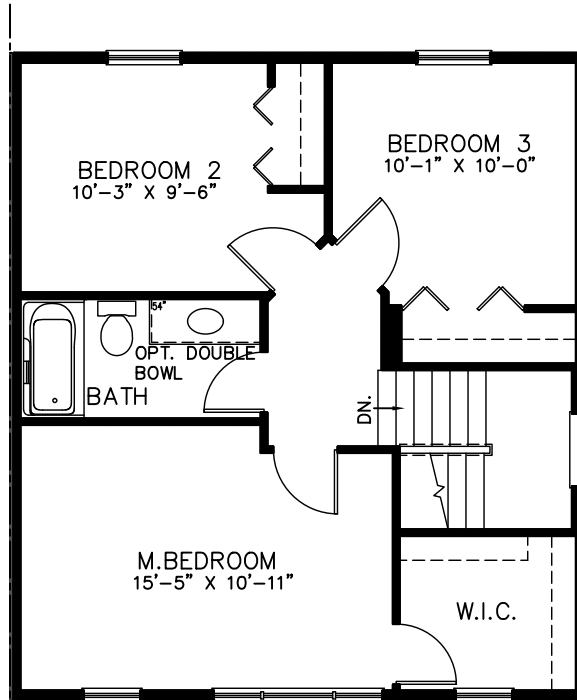


ALL AREA DIMENSIONS ARE APPROXIMATE. FLOOR PLANS AND ELEVATIONS MAY SHOW OPTIONAL ITEMS NOT INCLUDED WITH BASE PRICE. THE BUILDER RESERVES THE RIGHT TO IMPROVE THE PLANS BY REVISING THE SPECIFICATIONS AND DIMENSIONS WITHOUT NOTICE.

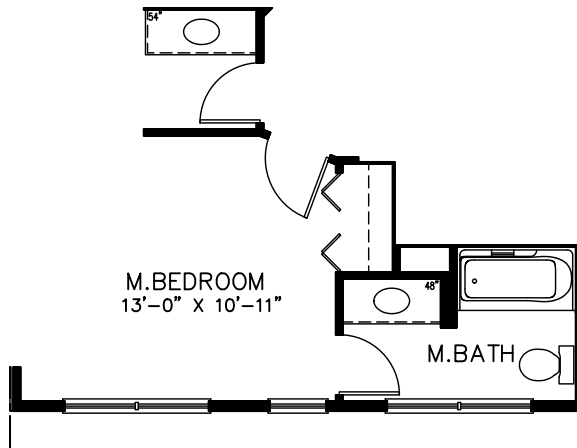
FIRST FLOOR

4-2-2019

MacPHERSON



ELEVATION A, B FLOOR PLAN
8' WALLS



ALL AREA DIMENSIONS ARE APPROXIMATE. FLOOR PLANS AND ELEVATIONS MAY SHOW OPTIONAL ITEMS NOT INCLUDED WITH BASE PRICE. THE BUILDER RESERVES THE RIGHT TO IMPROVE THE PLANS BY REVISING THE SPECIFICATIONS AND DIMENSIONS WITHOUT NOTICE.

SECOND FLOOR